

Mandatory Connection 1st Information Meeting

February 13, 2017

Meeting Objectives

- **Review project**
- **Explain mandatory connection process via Frequently Asked Questions**
- **Answer questions**
- **Supply contact info for future questions**
- **Allow one-on-one discussions w/CFPUA staff**

Frequently Asked Questions

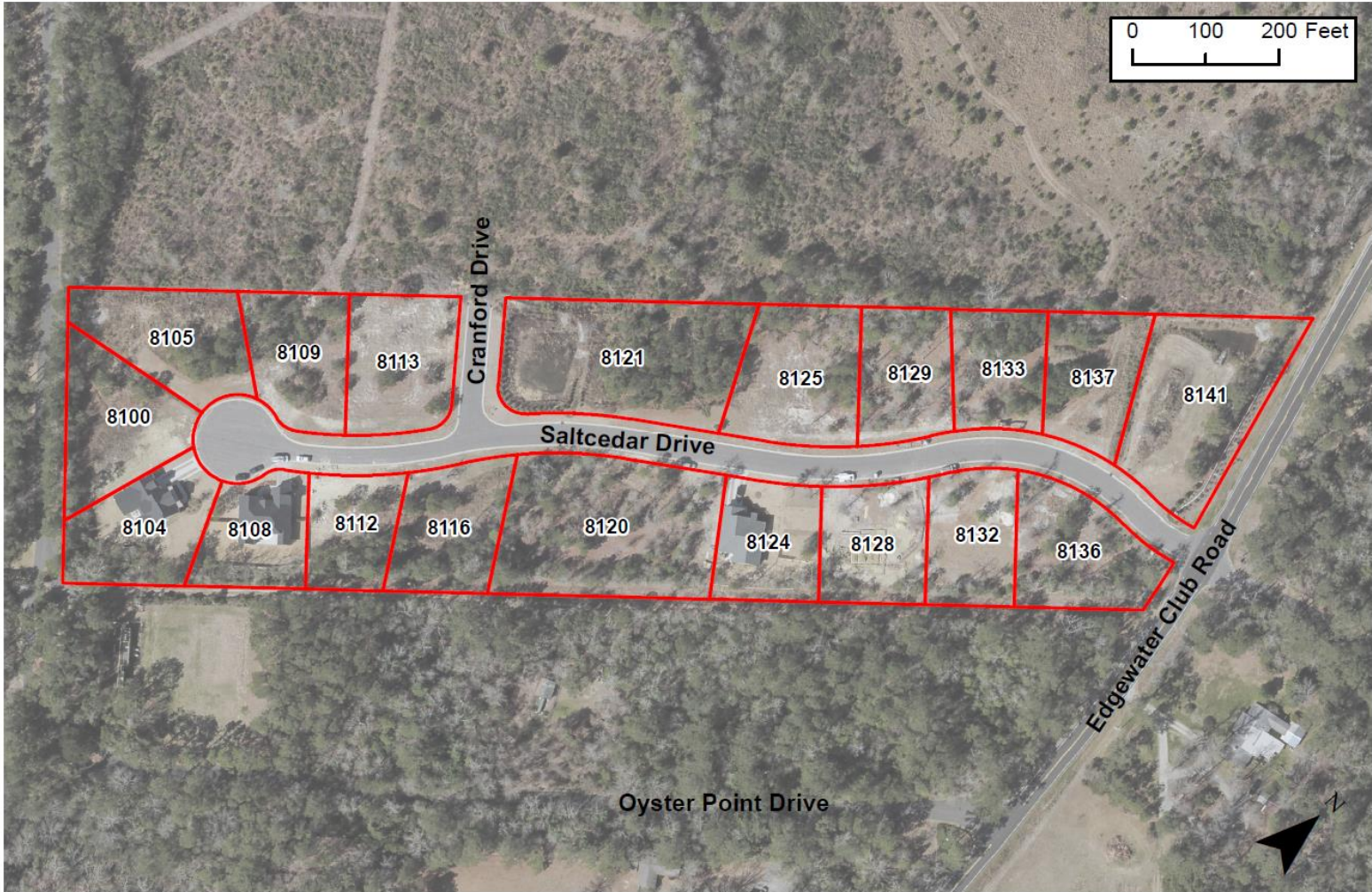
1. What is this project all about?
2. What is mandatory connection?
3. Can I be exempt from this process?
4. Can I defer my connection?
5. What do I need to do to connect?
6. How much does CFPUA charge?
7. Can I do the plumbing work myself?
8. What is the deadline for connection?

Frequently Asked Questions

1. What is this project about?

Mandatory connection of homes to sewer service lines

- Central services are provided. Many benefits.
 - Safe, reliable handling of sewage
 - General move from septic for environmental benefit
 - Treated effluent (better than received)
 - Increased property values



Frequently Asked Questions

2. What is mandatory connection?

- Process used by cities, counties, authorities
- Pays for construction, maintenance of infrastructure
- Why? Plants, mains, pump stations cost millions.
- Allows costs to be spread over larger group, making them more affordable overall
- Enables extension of essential services to more areas

Frequently Asked Questions

3. Could I be exempt from the process?

- No, all structures in the community are within 500 feet of the sewer lines
- House Bill 44: Does not apply to sewer projects

Frequently Asked Questions

4. How can I defer my connection?

- **Yes, a connection deferral option is offered**
 - One three-year deferral
 - No additional term. After term ends, connection required.
 - Septic system inspected by licensed inspector. Report submitted to CFPUA.
 - True deferral for sewer. No financial payments required.
 - No bi-monthly sewer base (availability) charge
 - Begin to pay bi-monthly at connection. (End of deferral.)
 - Must apply for the deferral within the Mandatory Connection period's first 60 days

Frequently Asked Questions

5. What do I need to do to connect?

- Complete a CFPUA application
- Obtain a NHC plumbing permit
- Connect your home to the sewer tap
- Have your connection inspected and approved by New Hanover County

Frequently Asked Questions

6. How much does CFPUA charge?

- **Charges/fees for sewer customers:**

System Development Charge: \$2,030

System Connection Fee is NOT being charged

- **Sewer taps installed by the developer**

Private costs to you:

- *Private plumbing from the home to the sewer tap*
 - *Estimated at \$15-\$20 per linear foot (if not roughed in)*
- *Elimination of septic system from service (suggested)*

Frequently Asked Questions

7. I'm not sure if I can afford the private plumbing costs. Can I do the plumbing work myself?

Yes, if all of the following are true:

- A single family home
- Your primary residence
- Building permit approval granted by New Hanover County Building Inspections

Frequently Asked Questions

8. What is the deadline for connection?

February/March 2018

Fail to meet the deadline?

- Bi-monthly penalty billing for sewer service
- Charged Fixed Rate of \$29.10 every 2 months
- Last resort: Property liens

Important Dates

1st Homeowner outreach meeting:

Tonight

2nd Homeowner outreach meeting:

August 2017

Mandatory Connection Period Start:

August/September 2017

Connection deferral request deadline:

60 days after connection period begins

Final connection deadline:

February/March 2018

Contact Information

www.cfpua.org

QUESTIONS?

Mike McGill, Chief Communications Officer

mike.mcgill@cfpua.org

332-6704