

# **Mandatory Connection 1<sup>st</sup> Information Meeting**

**February 13, 2017**

# Meeting Objectives

- **Review project**
- **Explain mandatory connection process via Frequently Asked Questions**
- **Answer questions**
- **Supply contact info for future questions**
- **Allow one-on-one discussions w/CFPUA staff**

# Frequently Asked Questions

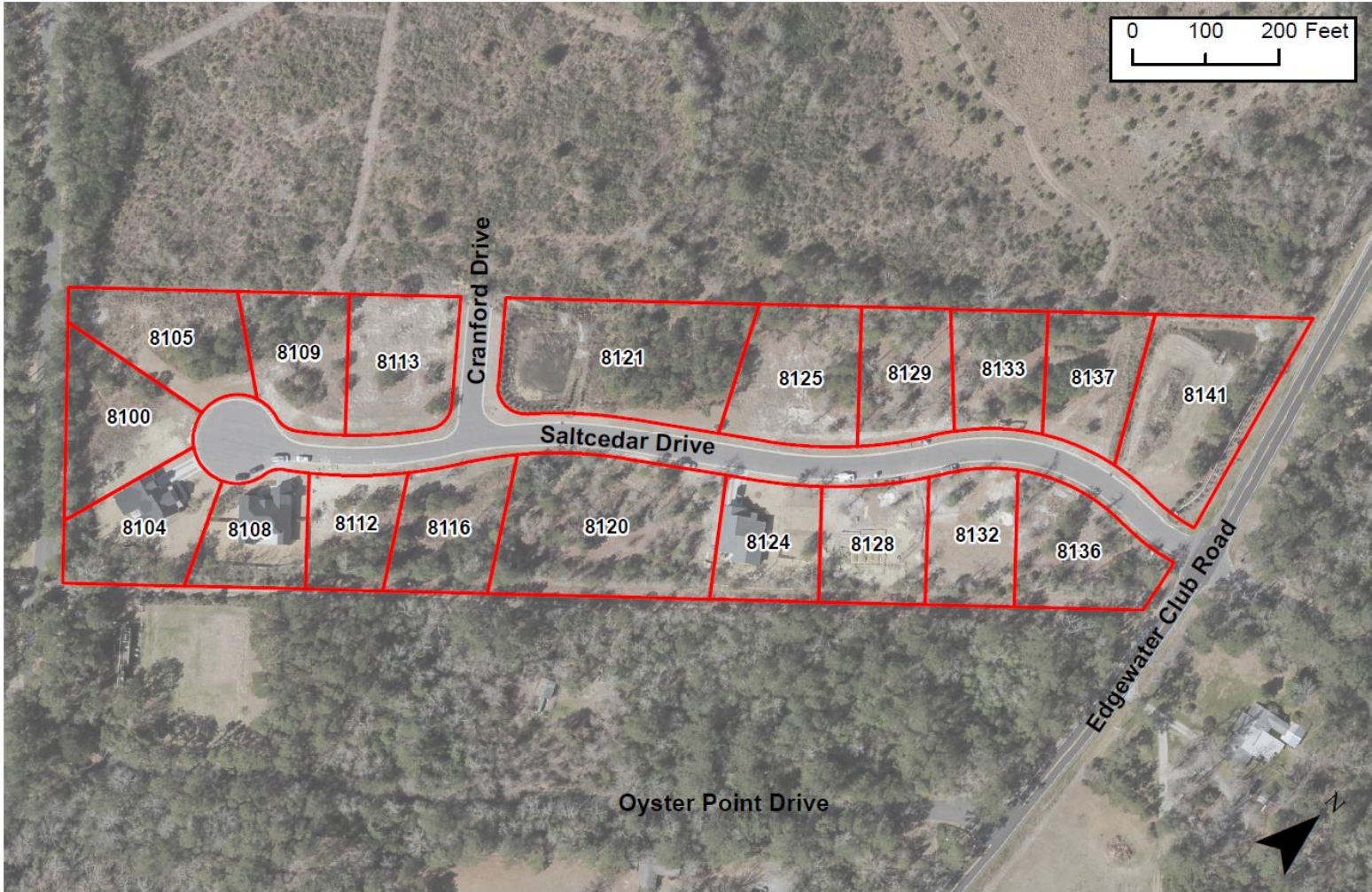
1. What is this project all about?
2. What is mandatory connection?
3. Can I be exempt from this process?
4. Can I defer my connection?
5. What do I need to do to connect?
6. How much does CFPUA charge?
7. Can I do the plumbing work myself?
8. What is the deadline for connection?

# Frequently Asked Questions

## 1. What is this project about?

### Mandatory connection of homes to sewer service lines

- Central services are provided. Many benefits.
  - Safe, reliable handling of sewage
  - General move from septic for environmental benefit
  - Treated effluent (better than received)
  - Increased property values



# Frequently Asked Questions

## 2. What is mandatory connection?

- Process used by cities, counties, authorities
- Pays for construction, maintenance of infrastructure
- Why? Plants, mains, pump stations cost millions.
- Allows costs to be spread over larger group, making them more affordable overall
- Enables extension of essential services to more areas

# Frequently Asked Questions

## 3. Could I be exempt from the process?

- No, all structures in the community are within 500 feet of the sewer lines
- House Bill 44: Does not apply to sewer projects

# Frequently Asked Questions

## 4. How can I defer my connection?

- **Yes, a connection deferral option is offered**
  - One three-year deferral
  - No additional term. After term ends, connection required.
  - Septic system inspected by licensed inspector. Report submitted to CFPUA.
  - True deferral for sewer. No financial payments required.
  - No bi-monthly sewer base (availability) charge
    - Begin to pay bi-monthly at connection. (End of deferral.)
  - Must apply for the deferral within the Mandatory Connection period's first 60 days



# Frequently Asked Questions

## 5. What do I need to do to connect?

- Complete a CFPUA application
- Obtain a NHC plumbing permit
- Connect your home to the sewer tap
- Have your connection inspected and approved by New Hanover County

# Frequently Asked Questions

## 6. How much does CFPUA charge?

- **Charges/fees for sewer customers:**

**System Development Charge: \$2,030**

**System Connection Fee is NOT being charged**

- **Sewer taps installed by the developer**

*Private costs to you:*

- *Private plumbing from the home to the sewer tap*
  - *Estimated at \$15-\$20 per linear foot (if not roughed in)*
- *Elimination of septic system from service (suggested)*

# Frequently Asked Questions

7. I'm not sure if I can afford the private plumbing costs. Can I do the plumbing work myself?

**Yes, if all of the following are true:**

- A single family home
- Your primary residence
- Building permit approval granted by New Hanover County Building Inspections

# Frequently Asked Questions

## 8. What is the deadline for connection?

February/March 2018

### Fail to meet the deadline?

- Bi-monthly penalty billing for sewer service
- Charged Fixed Rate of \$29.10 every 2 months
- Last resort: Property liens

# Important Dates

1<sup>st</sup> Homeowner outreach meeting:

**Tonight**

2<sup>nd</sup> Homeowner outreach meeting:

**August 2017**

Mandatory Connection Period Start:

**August/September 2017**

Connection deferral request deadline:

**60 days after connection period begins**

Final connection deadline:

**February/March 2018**

# Contact Information

[www.cfpua.org](http://www.cfpua.org)

**QUESTIONS?**

**Mike McGill, Chief Communications Officer**

**[mike.mcgill@cfpua.org](mailto:mike.mcgill@cfpua.org)**

**332-6704**